

APPENDIX H:

Nevada Class I Area Monitoring Data Summary Tables and Charts

Includes the following subsections:

Subsection	IMPROVE Monitor	Class I Area(s) Represented
H.1	JARB1	Jarbidge WA

H.1. JARBIDGE WA (JARB1)

The following tables and figures are presented in this section for the Jarbidge WA represented by the JARB1 IMPROVE Monitor:

- **Table H.1-1: Annual Averages, 5-Year Period Averages, and Trends:** Table of averages and other metrics for the 20% least impaired days, the 20% most impaired days, and all sampled days is presented.
- **Figure H.1-1: Annual and 5-Year Period Averages for the 20% Most Impaired Visibility Days:** Line graphs depicting annual and period averages by component are presented.
- **Figure H.1-2: Annual and 5-Year Period Averages for the 20% Least Impaired Visibility Days:** Line graphs depicting annual and period averages by component are presented.
- **Figure H.1-3: 20% Most Impaired Visibility Days:** Pie charts depicting period averages and stacked bar charts depicting annual averages by component for the 20% most impaired days are presented.
- **Figure H.1-4: 20% Least Impaired Visibility Days:** Pie charts depicting period averages and stacked bar charts depicting annual averages by component are presented.
- **Figure H.1-5: 2000-2004 Monthly Average Aerosol Extinction, All Monitored Days:** Line graphs depicting monthly averages by year and component for the baseline period are presented.
- **Figure H.1-6: 2005-2009 Monthly Average Aerosol Extinction, All Monitored Days:** Line graphs depicting monthly averages by year and component for the progress period are presented.
- **Figure H.1-7: 2000-2004 Progress Period Extinction, All Sampled Days:** Stacked bar charts depicting daily averages by year and component for the baseline period are presented.
- **Figure H.1-8: 2000-2004 Progress Period Extinction, All Sampled Days:** Stacked bar charts depicting daily averages by year and component for the progress period are presented.

**Table H.1-1
Jarbidge WA, NV (JARB1 Site)
Annual Averages, 5-Year Period Averages and Trends**

Group	Baseline Period					Progress Period					2010	2000-2009 Trend Statistics*		Period Averages**			
	2000	2001	2002	2003	2004	2005	2006	2007	2008	2009		Slope (change/yr.)	p-value	Baseline (B)	Progress (P)	Difference (P - B)	Percent Change
Deciview (dv)																	
Best 20% Days	---	2.7	2.4	2.5	2.5	2.5	2.4	2.2	1.9	1.8	1.8	-0.1	0.0	2.6	2.2	-0.4	-15%
Worst 20% Days	---	12.7	12.8	12.1	10.7	11.3	13.8	13.4	12.5	11.1	10.0	-0.1	0.4	12.1	12.4	0.3	3%
All Days	---	7.1	7.0	6.9	6.4	6.5	7.1	7.0	6.5	5.9	5.7	-0.1	0.1	6.9	6.6	-0.3	-4%
Total Extinction (Mm-1)																	
Best 20% Days	---	13.2	12.8	12.9	12.9	12.8	12.7	12.5	12.1	12.0	12.0	-0.1	0.0	12.9	12.4	-0.5	-4%
Worst 20% Days	---	37.4	37.7	33.8	29.9	32.2	41.8	39.3	35.9	31.7	27.7	-0.3	0.4	34.7	36.2	1.5	4%
All Days	---	22.1	21.9	21.2	20.0	20.4	22.7	22.1	20.8	19.3	18.6	-0.2	0.2	21.3	21.0	-0.3	-1%
Ammonium Sulfate Extinction (Mm-1)																	
Best 20% Days	---	1.5	1.1	1.0	1.3	1.3	1.2	1.1	1.1	1.0	1.1	0.0	0.1	1.2	1.1	-0.1	-8%
Worst 20% Days	---	4.0	3.2	4.1	4.7	5.4	4.7	4.0	3.7	4.4	3.3	0.1	0.5	4.0	4.4	0.4	10%
All Days	---	2.9	2.2	2.3	2.7	3.2	3.1	2.9	2.5	2.7	2.4	0.0	0.4	2.5	2.9	0.4	16%
Ammonium Nitrate Extinction (Mm-1)																	
Best 20% Days	---	0.4	0.2	0.3	0.3	0.2	0.1	0.3	0.2	0.2	0.1	0.0	0.1	0.3	0.2	-0.1	-33%
Worst 20% Days	---	1.0	1.5	0.7	1.1	2.7	1.0	1.7	1.1	0.5	1.0	0.0	0.5	1.1	1.4	0.3	27%
All Days	---	0.8	0.8	0.7	0.7	1.0	0.7	0.9	0.6	0.6	0.7	0.0	0.1	0.7	0.8	0.1	14%
Particulate Organic Mass Extinction (Mm-1)																	
Best 20% Days	---	0.7	0.7	0.9	0.7	0.8	0.6	0.5	0.2	0.3	0.3	-0.1	0.0	0.8	0.5	-0.3	-38%
Worst 20% Days	---	10.6	13.4	9.7	6.5	6.3	13.9	10.4	12.1	7.3	4.3	-0.2	0.4	10.0	10.0	0.0	0%
All Days	---	3.8	4.6	4.0	3.1	2.9	4.3	3.4	3.9	2.6	2.0	-0.1	0.1	3.9	3.4	-0.5	-13%
Elemental Carbon Extinction (Mm-1)																	
Best 20% Days	---	0.3	0.3	0.3	0.3	0.2	0.2	0.2	0.1	0.1	0.1	0.0	0.0	0.3	0.2	-0.1	-33%
Worst 20% Days	---	2.3	1.8	1.5	1.0	1.2	3.2	1.6	1.5	1.1	0.8	-0.1	0.1	1.6	1.7	0.1	6%
All Days	---	0.9	0.8	0.8	0.6	0.7	1.1	0.7	0.6	0.5	0.4	0.0	0.0	0.8	0.7	-0.1	-13%
Soil Extinction (Mm-1)																	
Best 20% Days	---	0.1	0.1	0.1	0.1	0.1	0.1	0.1	0.1	0.1	0.1	0.0	0.1	0.1	0.1	0.0	0%
Worst 20% Days	---	2.8	3.0	1.8	1.9	1.6	2.5	3.7	2.6	2.3	2.5	0.0	0.5	2.4	2.6	0.2	8%
All Days	---	1.0	1.1	0.8	0.8	0.6	0.9	1.3	1.1	0.9	1.0	0.0	0.4	0.9	1.0	0.1	11%
Coarse Mass Extinction (Mm-1)																	
Best 20% Days	---	0.2	0.3	0.3	0.2	0.3	0.4	0.3	0.3	0.3	0.2	0.0	0.4	0.3	0.3	0.0	0%
Worst 20% Days	---	6.6	4.7	5.9	4.6	4.6	6.5	7.8	4.8	5.7	5.7	0.0	0.5	5.5	5.9	0.4	7%
All Days	---	2.4	2.3	2.6	2.1	1.8	2.4	2.8	2.1	1.9	2.1	-0.1	0.2	2.3	2.2	-0.1	-4%
Sea Salt Extinction (Mm-1)																	
Best 20% Days	---	0.0	0.0	0.0	0.1	0.0	0.1	0.0	0.1	0.0	0.0	0.0	0.3	0.0	0.0	0.0	0%
Worst 20% Days	---	0.1	0.0	0.0	0.1	0.3	0.0	0.1	0.0	0.3	0.1	0.0	0.3	0.1	0.2	0.1	100%
All Days	---	0.2	0.1	0.1	0.1	0.1	0.1	0.0	0.0	0.1	0.0	0.0	0.1	0.1	0.1	0.0	0%

*Values highlighted in blue (red) indicate statistically significant decreasing (increasing) annual trend. Significance is measured at the 85% confidence level (p-value ≤0.15).

**Values highlighted in blue indicate a decrease in the 5-year average, values highlighted in red indicate an increase.

---" Indicates a missing year that did not meet RHR data completeness criteria.

Figure H.1-1
Jarbidge WA, NV (JARB1 Site)
Annual and 5-Year Period Averages
20% Most Impaired Visibility Days

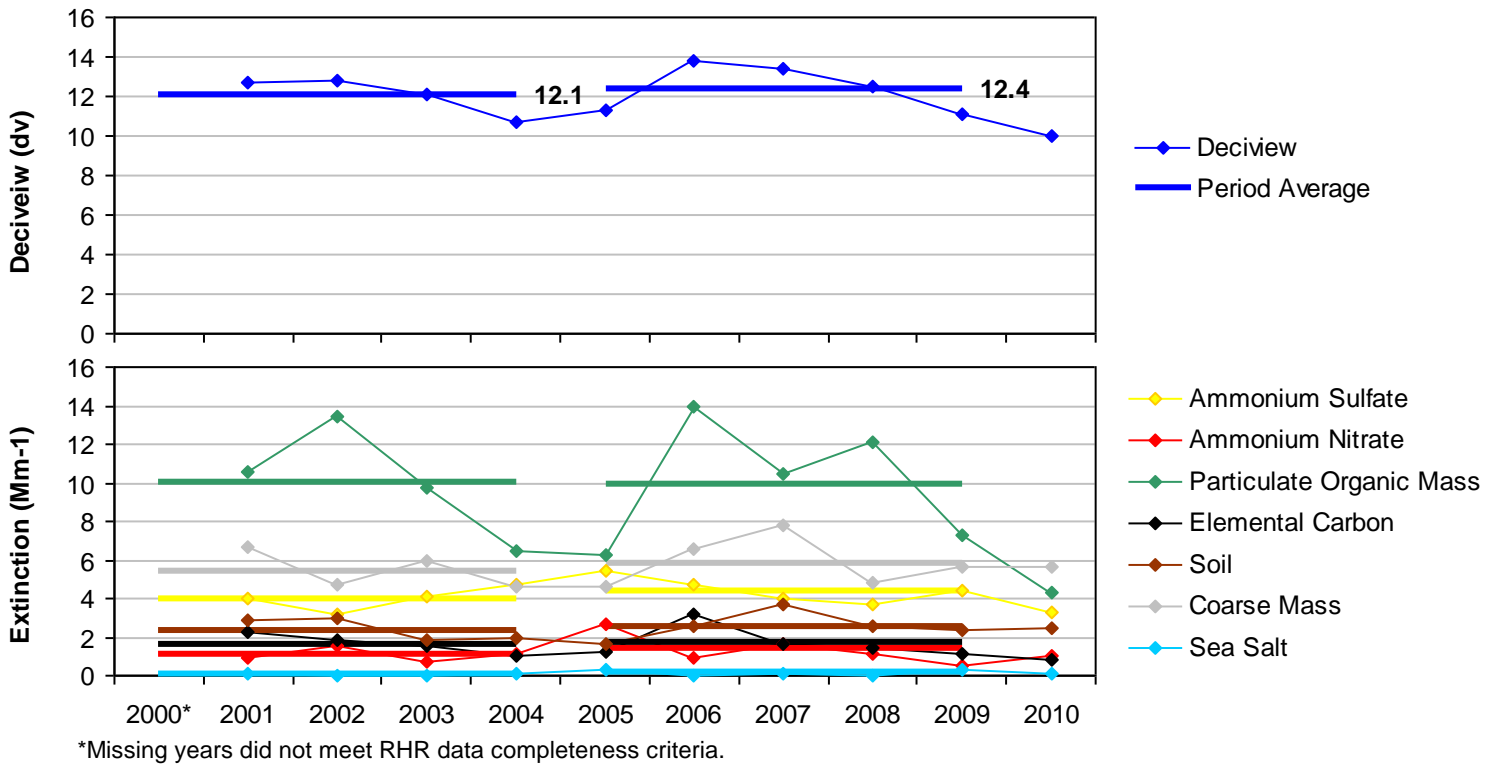


Figure H.1-2
Jarbidge WA, NV (JARB1 Site)
Annual and 5-Year Period Averages
20% Least Impaired Visibility Days

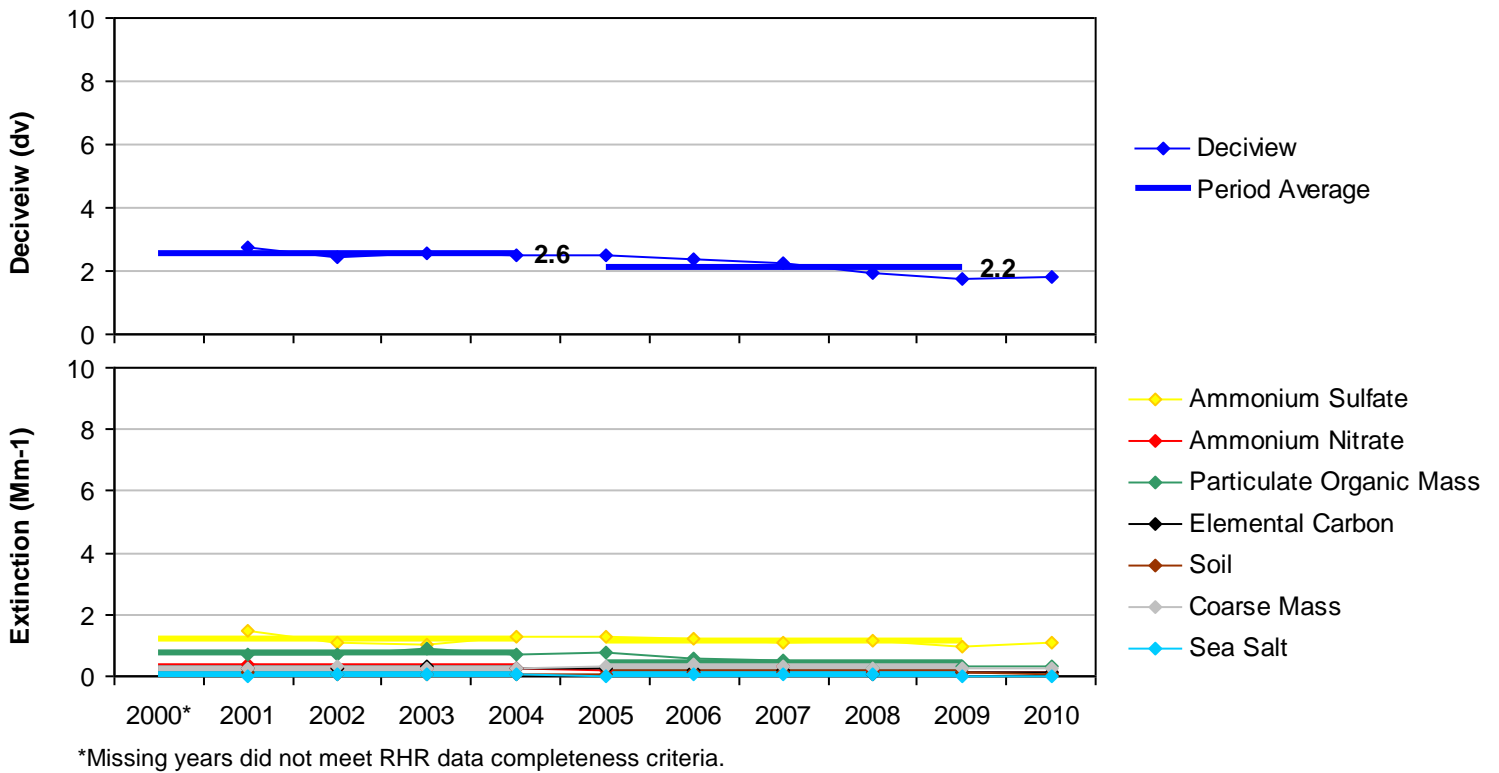
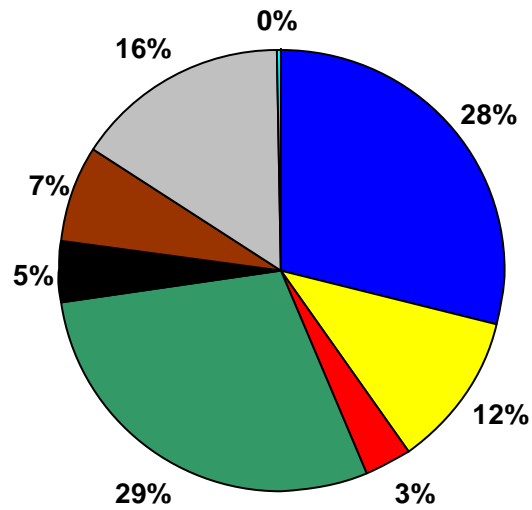
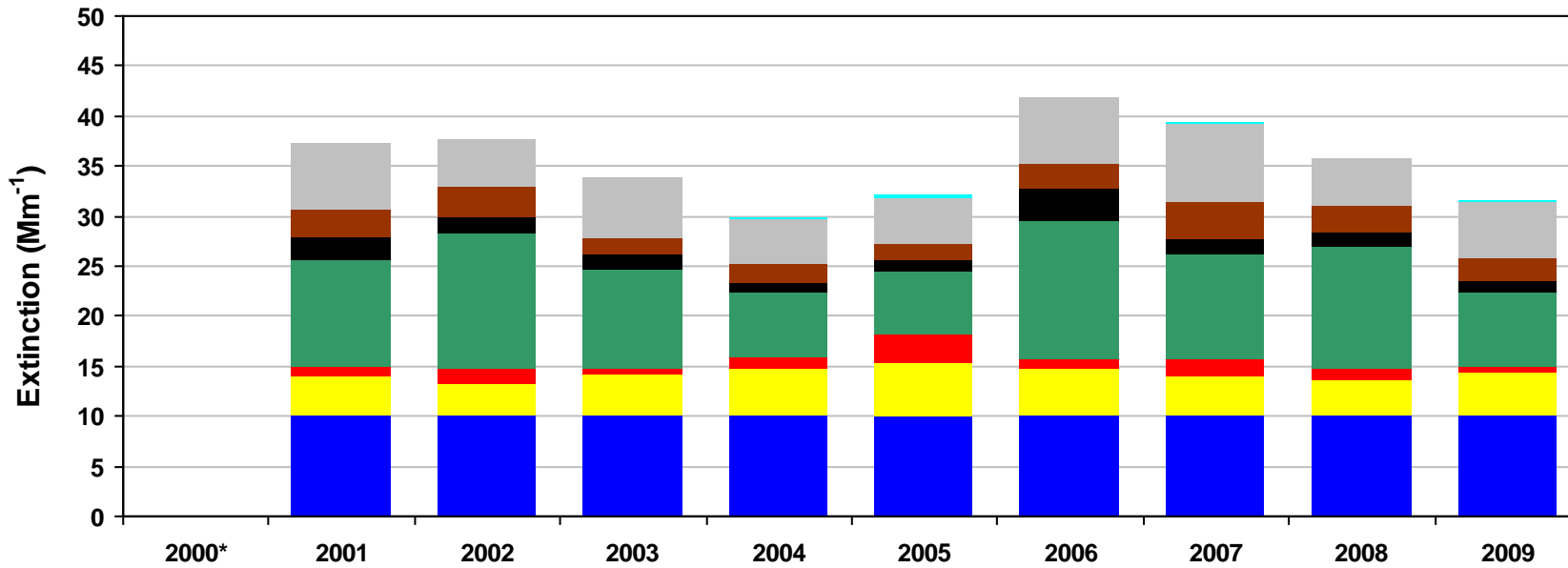
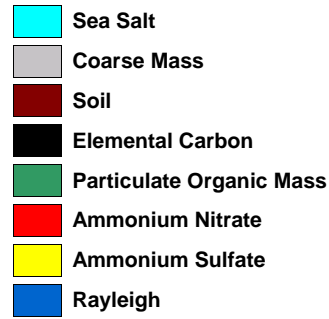
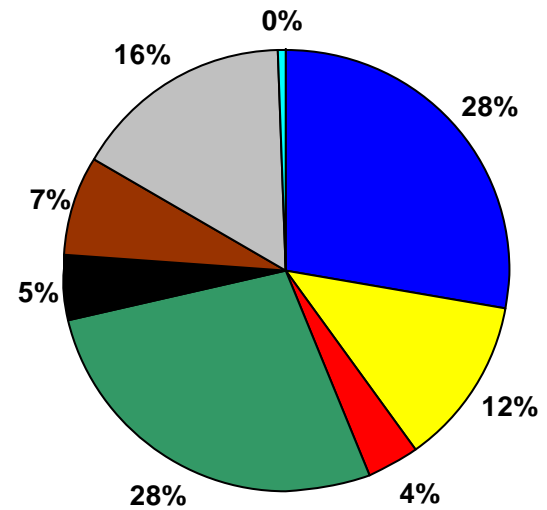


Figure H.1-3
Jarbridge WA, NV (JARB1 Site)
20% Most Impaired Visibility Days

2000-2004 Baseline Average
 12.1 dv (10.7 - 12.8 dv)



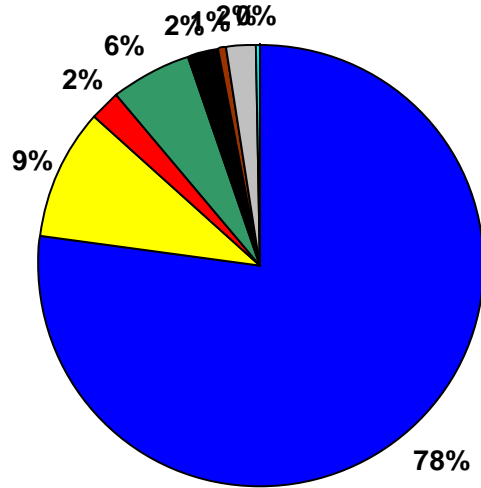
2005-2009 Progress Period Average
 12.4 dv (11.1 - 13.8 dv)



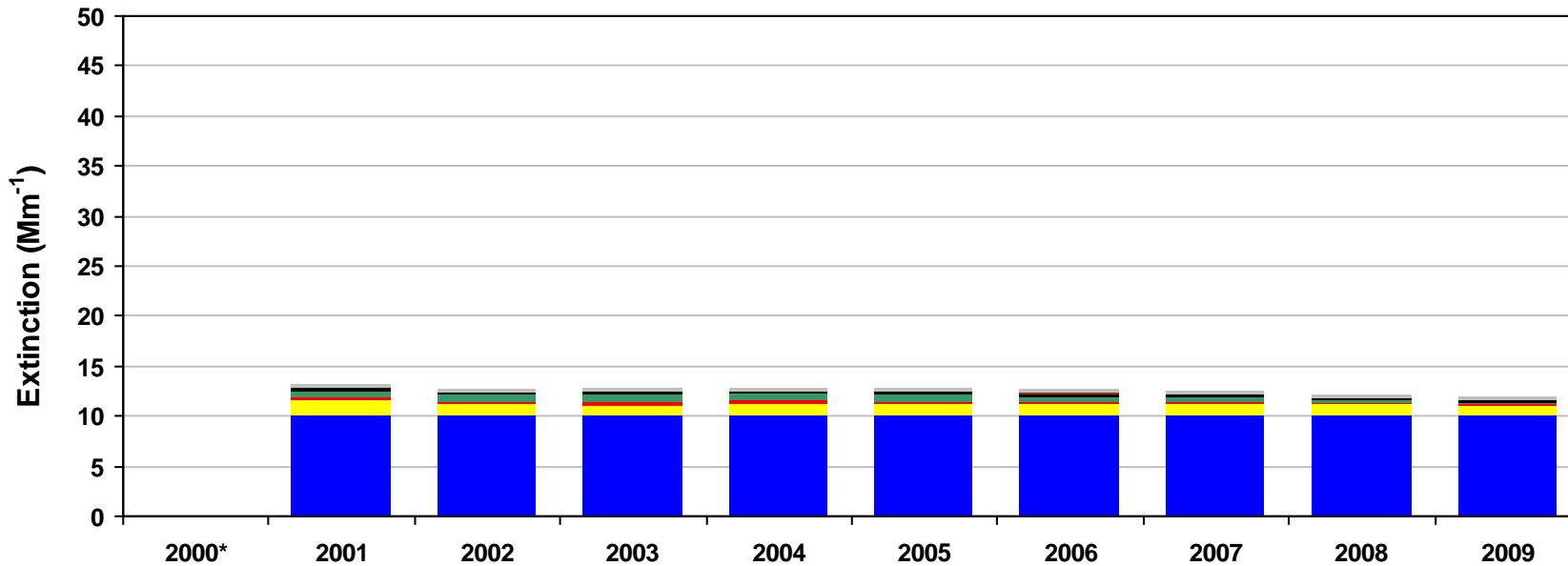
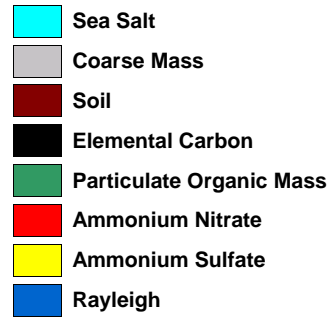
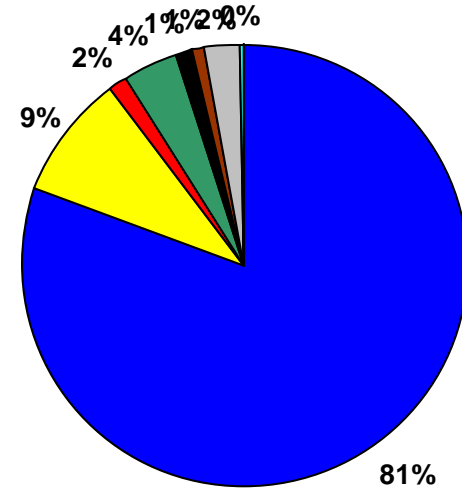
*Missing years did not meet RHR data completeness criteria. Only complete years are included in 5-year average pie charts.

Figure H.1-4
Jarbidge WA, NV (JARB1 Site)
20% Least Impaired Visibility Days

2000-2004 Baseline Average
 2.6 dv (2.4 - 2.7 dv)

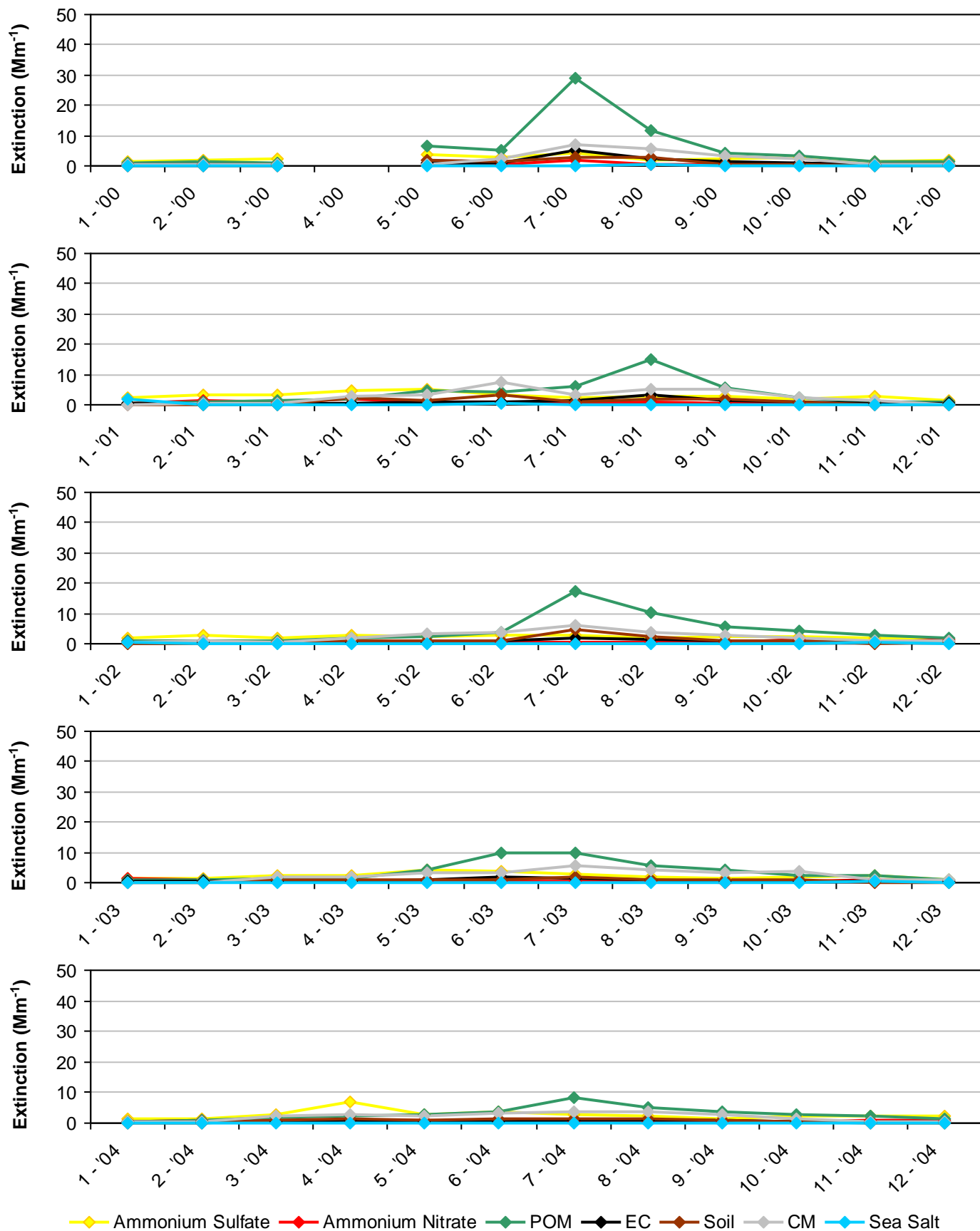


2005-2009 Progress Period Average
 2.2 dv (1.8 - 2.5 dv)



*Missing years did not meet RHR data completeness criteria. Only complete years are included in 5-year average pie charts.

Figure H.1-5
Jarbridge WA, NV (JARB1 Site)
2000-2004 Monthly Average Aerosol Extinction, All Monitored Days



*Note that monthly averages for the year 2000 are shown here, but this year did not meet RHR data completeness criteria.

Figure H.1-6
Jarbridge WA, NV (JARB1 Site)
2005-2009 Monthly Average Aerosol Extinction, All Monitored Days

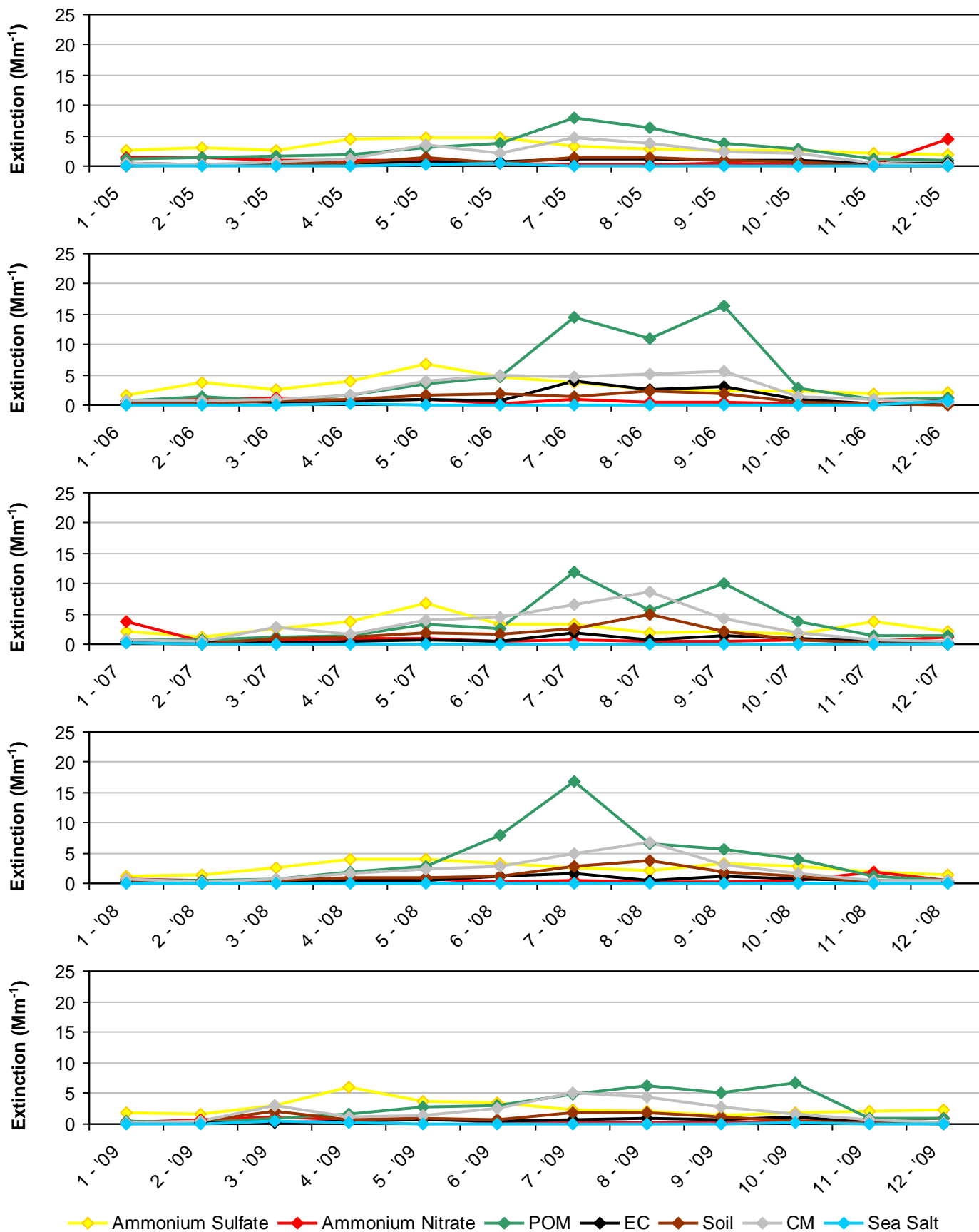
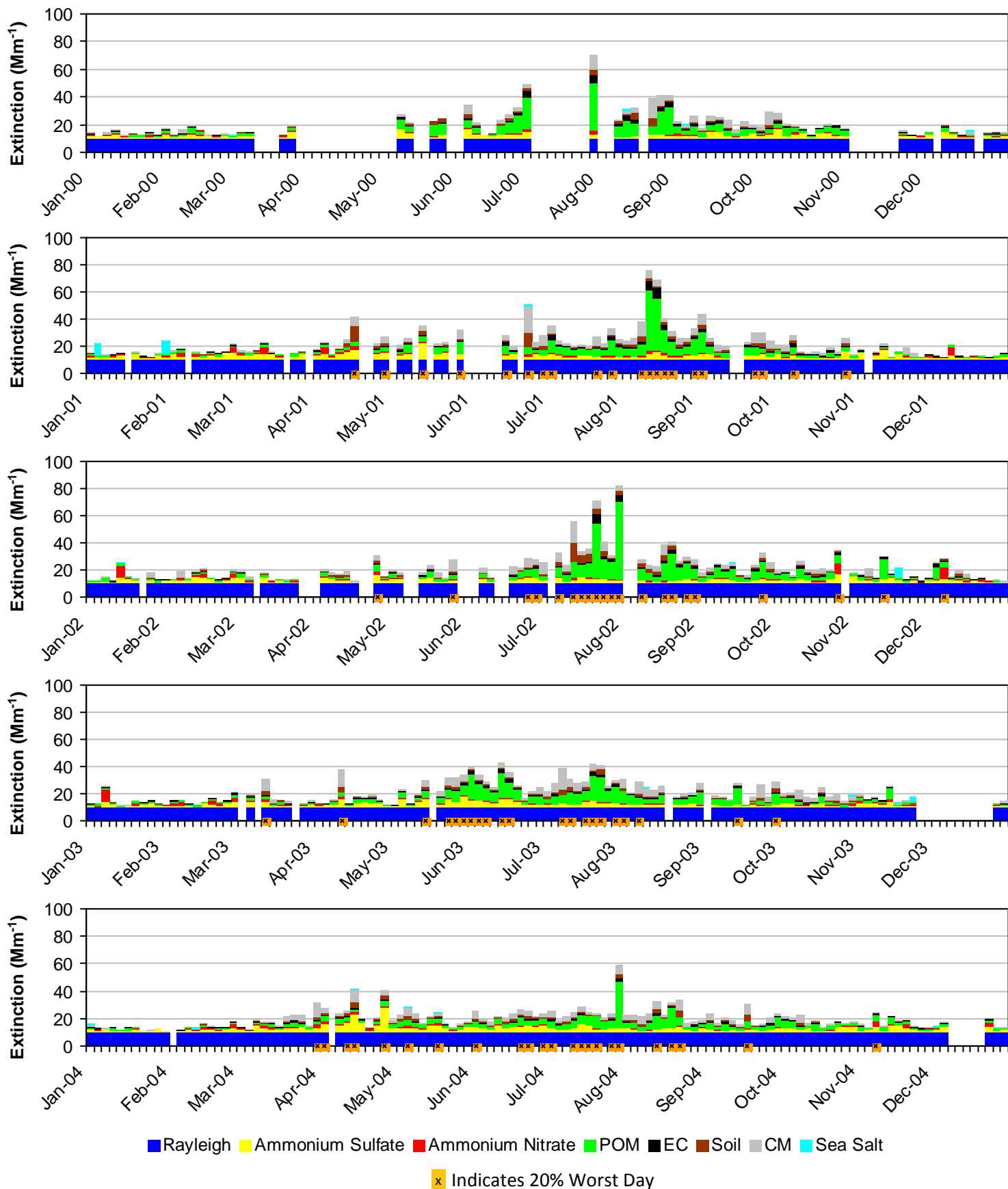


Figure H.1-7
Jarbridge WA, NV (JARB1 Site)
2000-2004 Progress Period Extinction, All Sampled Days



*Note that daily averages for the year 2000 are shown here, but this year did not meet RHR data completeness criteria.

Figure H.1-8
Jarbridge WA, NV (JARB1 Site)
2005-2009 Progress Period Extinction, All Sampled Days

